

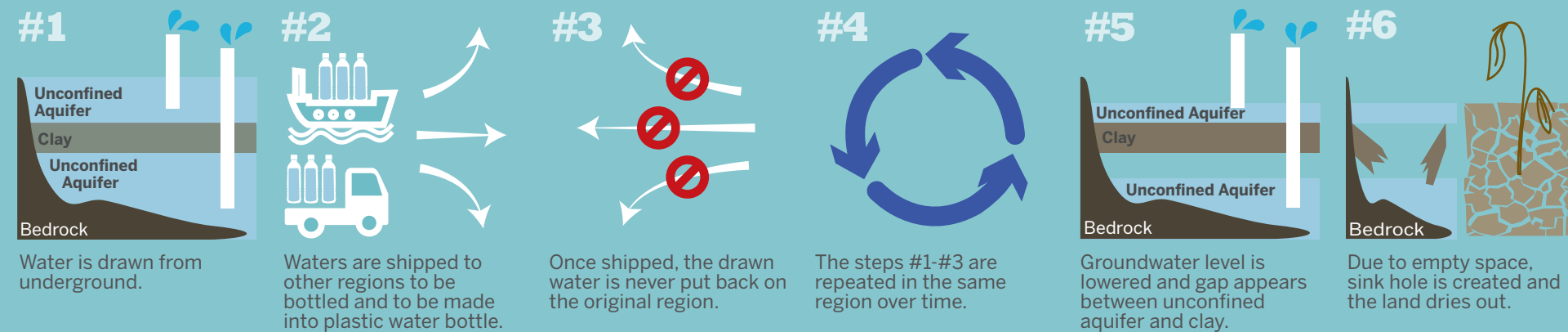
Plastic Water Bottles Make the Earth Thirsty

Problems regarding water mining are often disregarded as a second-important issue in bottled water discussion, if not third, fourth, or the least; however, in the scope of the harm that it causes and the level of seriousness of the problem, water mining should gain more attention. Although it is easy to think that water is an unlimited resource, the amount of water that human can use is quite limited because it takes time for mother nature to recharge its water that we can use.

Present generation is very much used to the idea of spending as much as one desire. Spending it something that we praise, and the idea of reserving is rather scoffed at. Because of this over-consuming culture, natural resources such as trees, land, and clean water are being used up in the fastest speed ever. The use of plastic water bottles expedites this speed by two ways: 1) by mining drinking water, and 2) by mining water that is needed to produce plastic bottle. We are already out of water that we are mining deeper and deeper. The result is that we are using water that is supposed to be reserved for the future generation. Deep water that is in the layer of unconfined aquifer should not be touched, if we are to live in a right way.

Although plastic water bottles and bottled water is not the major reason why of over drafting water, it consumed not a small amount of water and results in drought.

How Does It Make The Earth Thirsty?



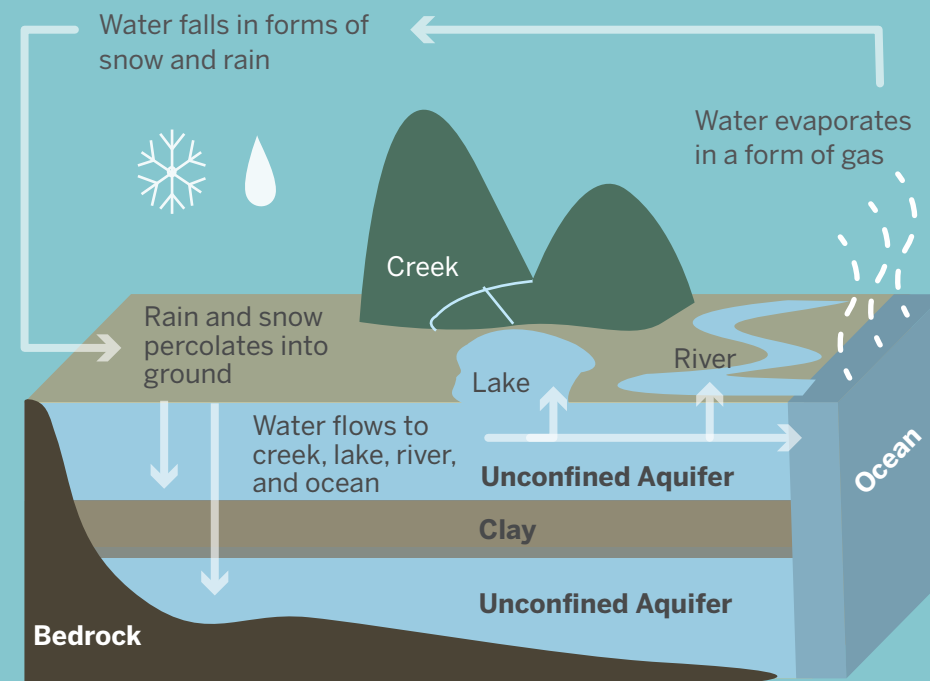
Refill Takes Time

It takes time for land to recharge its water inside because the nature has its cycle operates on its own speed and pace. It is out of human ability to control this speed and cycle. Some help may be given such as planting trees, but it is not effective.

Water runs cycle as diagram on the right shows.

Recharging rate and water mining rate is different from valley to value and largely depending on rain and temperature, however, Ogallala, Texas' largest aquifer recharges less than 0.5 maf/year. On average, people draw 5-8 maf water per year from it.

Some aquifers never recover from over draft.



How Much Do We Consume?

